

# Rapid Service Procedure



Rapid 25	(G.C. 47-291-08)
Rapid 32	(G.C. 47-291-09)

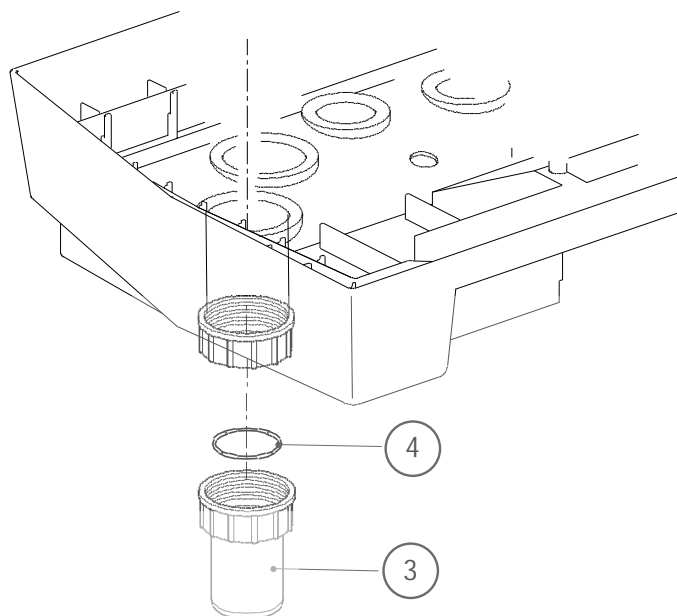
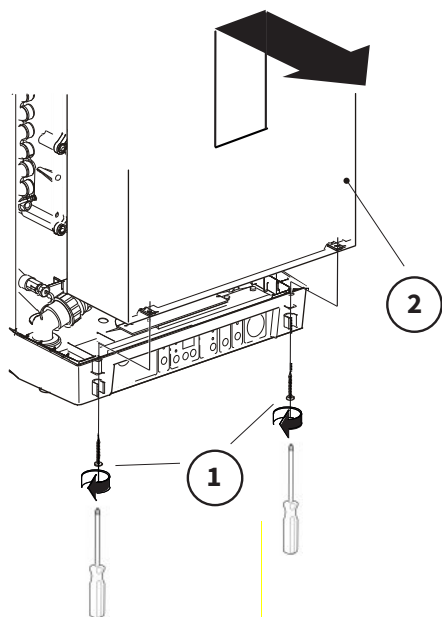


Smart Opentherm™

**INTERGAS®**  
BOILERS

## Service variations (Rapid).

- ▶ The Rapid boiler variations are shown in this section however the relevant service type (Service (A) page 6, or service (B) page 8) must be followed with the CO<sub>2</sub> settings as per those set out in the previous tables 4a & 4b page 14.
- ▶ Switch off the appliance and isolate the power supply at the fuse spur, make safe the appliance before continuing (Ref TB118).
- ▶ Close the boiler gas isolation valve (test for let-by).
- ▶ Remove the room sealed cover of the boiler by loosening the two screws (1) and then sliding the panel up and forward (2).
- ▶ Wait until the boiler has cooled down. This can be done by opening a domestic hot water tap (with the power switched off).



## Syphon maintenance

- ▶ Detach the syphon cup (3) by rotating it to the left (anticlockwise) and then pulling it out downwards.
- ▶ Inspect and if damaged replaced the rubber seal (4)
- ▶ Empty the syphon cup (3).
- ▶ Clean the following components with water:
  - The inside of syphon
  - The syphon cup
  - The syphon seal
  - Flush the condense pipework
- ▶ Replace the syphon cup and ensure that is filled  $\frac{3}{4}$  full of water.

### CAREFUL



- ▶ Always fill the condensate trap with water then attach it to the boiler before powering it up.
- ▶ To fill the condensate trap the hose between the trap and PRV should be removed (from the trap side). The hose must be re-attached after filling the trap !
- ▶ Not replacing or filling up the condensate trap can result in products of combustion entering the room leading to a potentially dangerous situation.

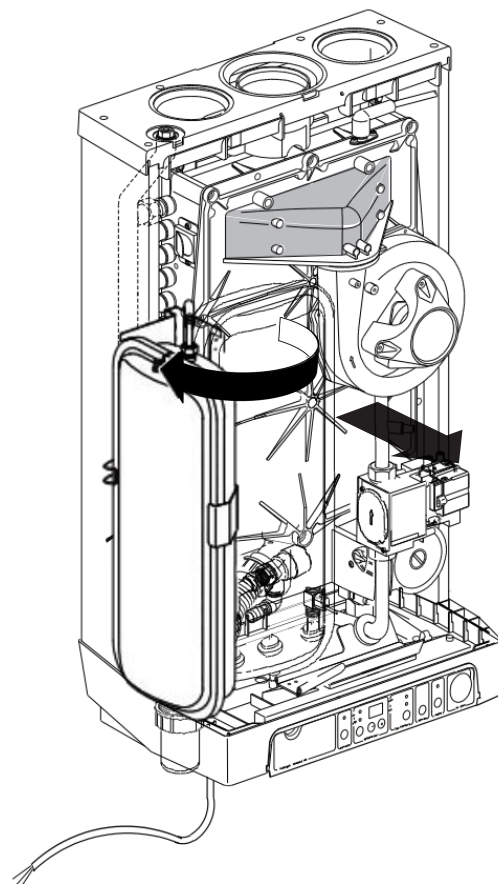
## Annual service continued (internal maintenance)

- ▶ Lift and rotate the expansion vessel to the left side.
- ▶ Disconnect the electrical connector to the fan assembly.
- ▶ Close the gas isolation valve and check for tightness & let-by.
- ▶ Loosen both unions and the electrical connector, then remove the gas valve.
- ▶ Unscrew the 6mm Allen key shoulder bolts of the front plate and remove it forward along with the fan (Being careful not to damage any components). Lay the removed front plate face down onto its foot supports, this is best achieved on a flat heat-proof surface.
- ▶ The burner and the integrated insulation panel do not require cleaning only inspecting. Therefore, never use a brush or compressed air to clean these components (dust hazard).



### COMMENT

- ▶ **The expansion vessel must be inspected and tested at each annual service and if required re-pressurise to between 0.75 & 1.0 bar (cold and with no system pressure)**  
**Ensure the flexible hose is not kinked, leaking or damaged (Replace if required).**



## Annual service continued (cleaning).

- ▶ Clean the heat exchanger from top to bottom as per the previous sections page 9 using the recommended tools.
- ▶ Once the heat exchanger has been cleaned and all the seals checked or replaced, the please follow the reassembly procedure for the front plate as detailed on page 10



### CAREFUL

- ▶ **The integrated insulation panel and burner seal contain ceramic fibres, use the appropriate P.P.E dust mask, eye protection & gloves.**

## Annual service procedure (re-assemble)



### IMPORTANT

- ▶ **Replace the front plate O-ring seal at least every 2 years or if damaged/ discoloured and /or if the front plate has been removed.**  
**Art.no: 086474 – Rapid 25 & 32**
- ▶ **All red Silicon front plate seals must be replaced, regardless of age with the black Viton.**
- ▶ **Check or replace the seals and gaskets detailed in the following page at the requested intervals .**
- ▶ **The outer casing is a room sealed cover and therefore extremely important that it is fitted correctly, failure to do so could lead to products of combustion entering the room / environment where it is situated.**

- ▶ Upon completion please fill out the relevant section of the Benchmark service record.

# INSPECTION OF SEALS & UNIONS (Rapid & \*HR22 boilers)

